



CHOICE PROPERTIES

Estate Agents

Karibou Kent Avenue,
Theddlethorpe, LN12 1QE

Price £425,000



It is a pleasure for Choice Properties to bring to the market this superb and expansive three bedroom detached bungalow. This immaculate and individually designed property sits proudly upon a large plot of attractive gardens and additionally benefits from an efficient Biomass heating system. This impressive property is located in a quiet and peaceful location with easy access to numerous scenic walking routes. The beach is only a short walk away and the towns of Mablethorpe and Sutton on Sea are also within easy reach. Early viewing is highly recommended.

The generously proportioned and flexible accommodation comprises:

Entrance Conservatory

8'4" x 17'9"

Sliding patio doors to front aspect, sliding patio doors into reception room, attractive paved pattern flooring, featured raised brick built bed, door to;-

Entrance Hall

18'3" x 4'4"

Two built in storage cupboards - one housing the radiator.

Reception Room

18'3" x 13'1"

Spacious reception room, timber featured 'spider-webb styled flooring, electric feature fire set into timber surround with tiled hearth and wooden mantle, TV Aerial point, sliding patio doors into the front entrance conservatory.

Kitchen

21'4" x 12'2"

Fitted with a range of wall and base units with worktops over, one and a half bowl resin sink unit with drainer and mixer taps, range cooker point with stainless steel extractor hood over, breakfast bar, featured island to the centre, space for large free standing fridge/freezer, plumbing for a washing machine and dishwasher, integral wine rack, part tiled walls, inset spotlights to the ceiling, TV Aerial point, telephone point, pedestrian door to side aspect into the garden.

Dining Area

8'2" x 12'2"

Spacious dining area, inset spotlights to the ceiling, character timber beams to the ceiling.

Conservatory

11'10" x 19'10"

Polycarbonate roof, door to rear garden and garage, timber decked seating area, raised paved flooring with attractive featured pond which also leads into the rear garden.

Games Room

27'0" x 14'0"

Log burner on tiled hearth, TV Aerial point, consumer unit, telephone point, inset spotlights to the ceiling.

Inner Hallway

13'8" x 4'4"

Bedroom 1

11'0" x 15'0"

Spacious double bedroom, built in storage wardrobes.

Bedroom 2

13'10" x 11'11"

Spacious double bedroom, built in fitted wardrobes with sliding doors.

Bedroom 3

9'11" x 11'11"

Double bedroom.

Bathroom

10'5" x 10'5"

Fitted with a four piece suite comprising step up corner bath with mixer tap and shower attachment over, shower cubicle with electric shower over and glass door, wash hand basin with mixer tap set into vanity unit, close coupled wc, tiled walls, inset spot lights to the ceiling.

Garage

28'2" x 12'7"

Electric roller door, power and lighting, ideal space for a workshop, wall mounted fuse box, extra appliance space.

Driveway

Gravelled driveway to the side of the bungalow providing off road parking for several vehicles.

Pump/ Store room

40'4" x 6'7"

Pump station store, power and lighting.

Garden

The property sits within a sizeable plot of beautifully maintained gardens with a south facing aspect and boasting well tended lawned areas as well as low maintenance paved and gravelled sections. The grounds are adorned with attractive plants, flowers and shrubbery and the boundaries are all edged by established trees, hedging and fencing making the gardens private and not overlooked. A fabulous ornamental fish pond and water feature create a calm and relaxing setting to enjoy this incredible garden. At the end of the rear garden is a timber cabin which could be used as storage but also because of the size and high quality build could also lend itself to many different uses.

Timber Shed

Timber shed housing the biomass boiler.

Viewing arrangements

By appointment through Choice Properties on 01507 472016.

Opening hours

Monday to Friday 9.00 a.m. to 5.00 p.m.

Saturday 9.00 a.m. to 3.00 p.m.

Making an offer

If you are interested in making an offer on this property please have a chat with us and we will be happy to start the negotiations for you. Under money laundering regulation we will ask you to provide us with formal photographic ID by way of either a passport or driving licence. If you are travelling from afar we would advise bringing this documentation with you just in case this home is perfect for you.

We would also like to make you aware that we will require details of your estate agents, proof of funds should you be a cash buyer and solicitors details, as this helps us to start the transaction quickly for you.

Tenure

Freehold

Council tax band

Local Authority - East Lindsey District Council,

Tedder Hall,

Manby Park,

Louth.

LN11 8UP

Tel. No. 01507 601 111

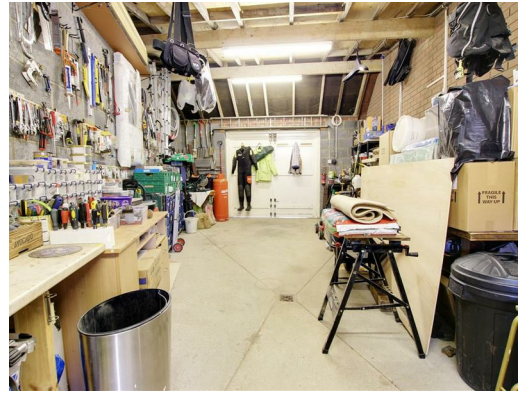
Website: www.e-lindsey.gov.uk

Council Tax Band - According to the Valuation Office Agency Website the property is currently in Council Tax Band C.

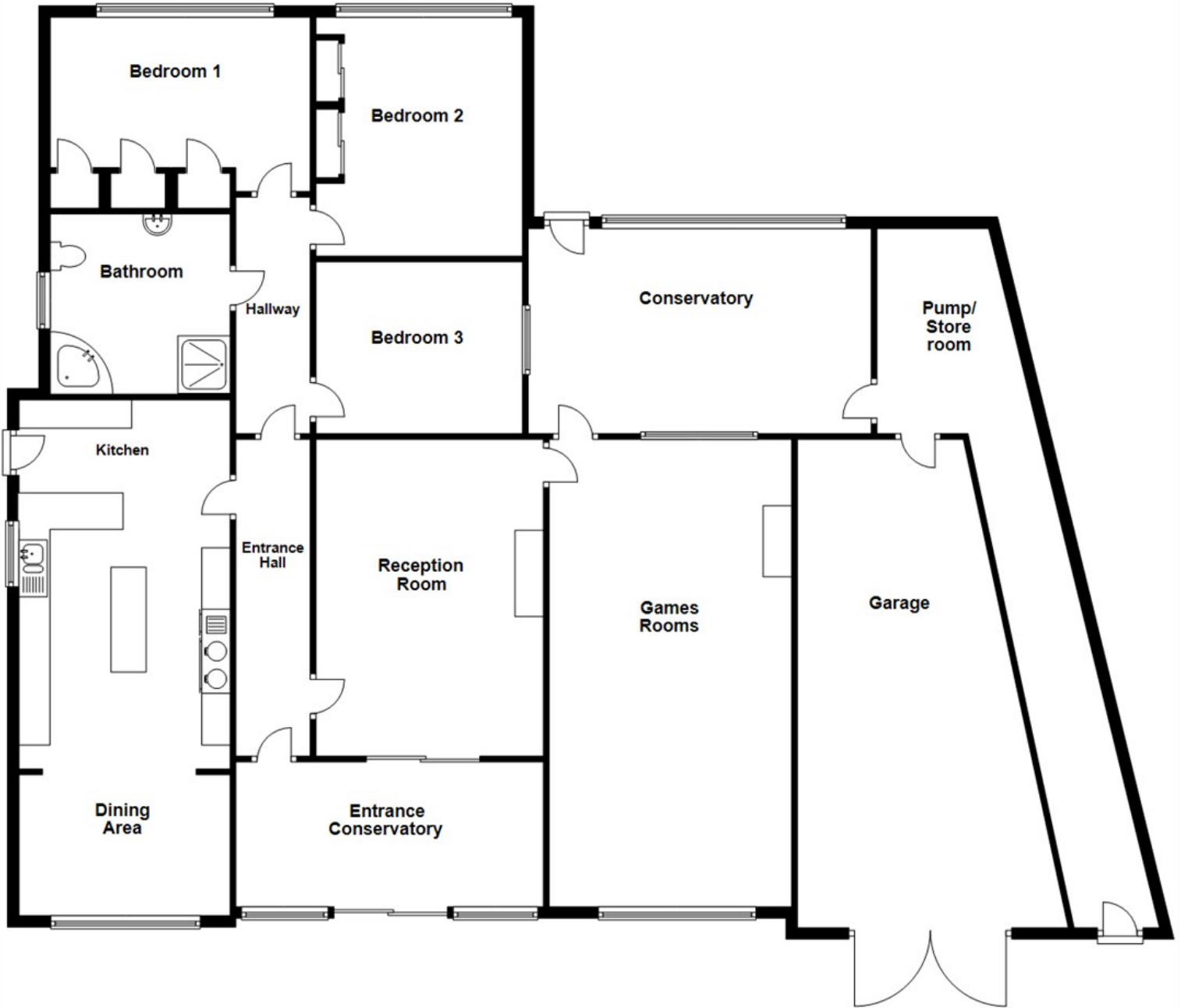
Choice Properties have not tested any included apparatus, equipment, fixtures, fittings, central heating systems or services mentioned in these particulars and purchasers are advised to satisfy themselves as to their working order and condition. Buyers are strongly advised to obtain verification from their Solicitor or Surveyor regarding the working order and condition of all the items included. These particulars do not constitute, nor constitute any part of, an offer or contract. All statements contained in these particulars as to this property are made without responsibility on the part of Choice Properties or the vendors or lessors. None of the statements contained in these particulars as to this property are to be relied on as statements or representations of fact. All measurements have been taken as a guide to prospective buyers only, and are approximate. Any intending purchasers must satisfy themselves by inspection or otherwise as to the correctness of each of the statements contained in these particulars. The vendors do not make or give and neither Choice Properties nor any person in their employment has any authority to make or give any representation or warranty whatever in relation to this property.







Ground Floor



Directions

Use postcode LN12 1QE to find the property. Karibou is located on a private road just off of Kent Avenue.

